

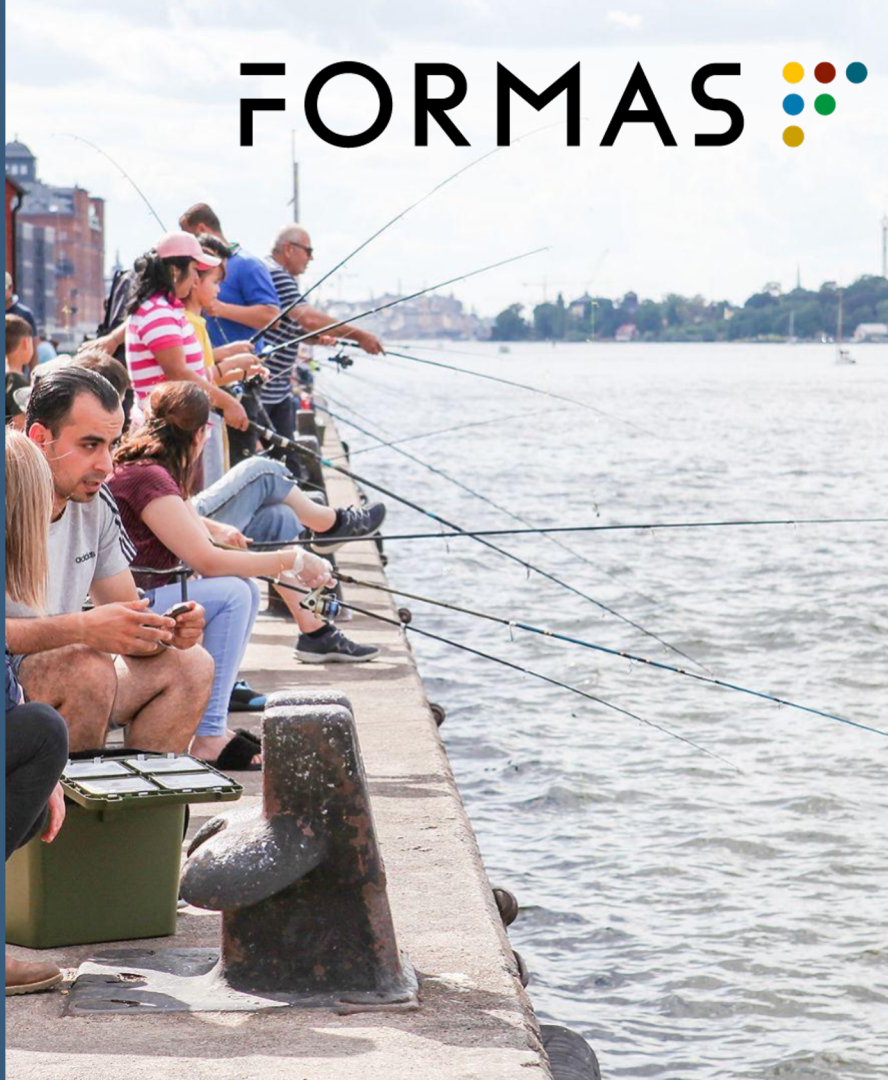
Blue Urban Commons

Using the case of street fishing for planning the sustainable and just city

Anja M. Rieser

*Natural Resources and Sustainable Development,
Department of Earth Sciences,
Uppsala University
anja.rieser@geo.uu.se*

FORMAS 



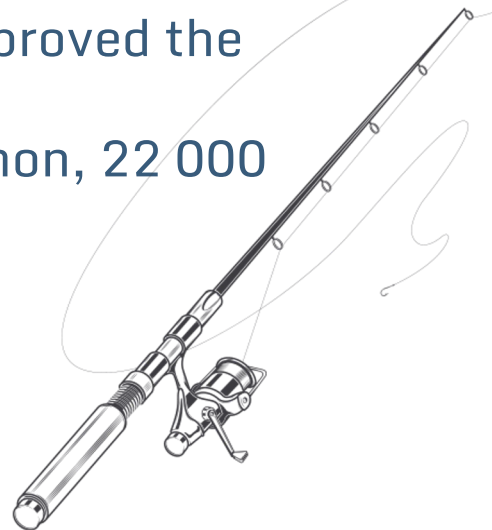
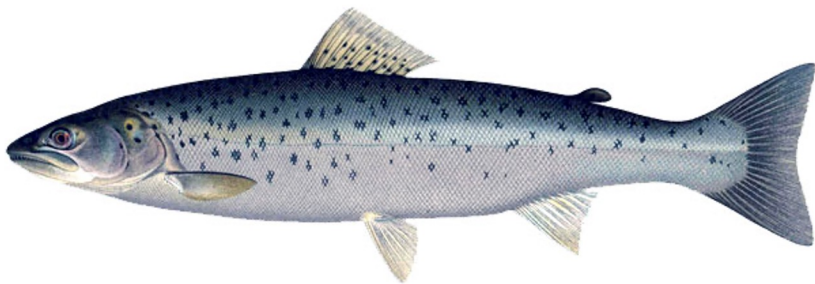
Commons in Stockholm

- Allemansrätten - The right to roam
- Right to access, walk, cycle, ride, ski and camp on any land- with exceptions
- Pick wild flowers, mushrooms and berries
- Fishing is mostly private- with exception of the biggest five lakes and the coast of the Baltic Sea, the Sound, Kattegat and Skagerrak



Fishing in Stockholm

- Recreational fishers in Sweden (13,6%)
- In Stockholm year 1436 commercial fishing started
- "Fritt handelskapsfiske" 1985 in Stockholm
- In the 70s water treatment improved the water quality drastically
- 140 000 sea trout, 10 000 salmon, 22 000 pikeperch, 5000 pike



Our project

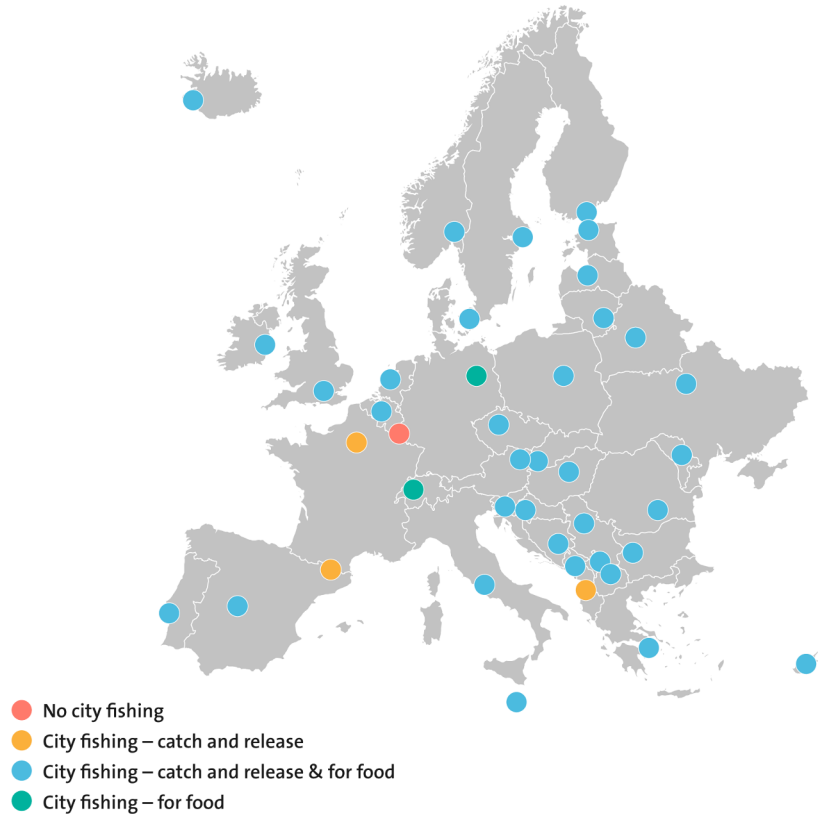
Urban fishing

Common, social activity, practised by broad range of people, in different ways for different reasons

- Access to water, food and recreation
- Sustainable use of fish populations
- Food safety and human health
- Animal welfare and aquatic urban diversity
- Connect and care for the blue environment

Our project

City fishing in European capitals



Our project

**Who are the
fishers?**

**What and where
do they fish?**

**How is the
ecological status of
the blue commons?**

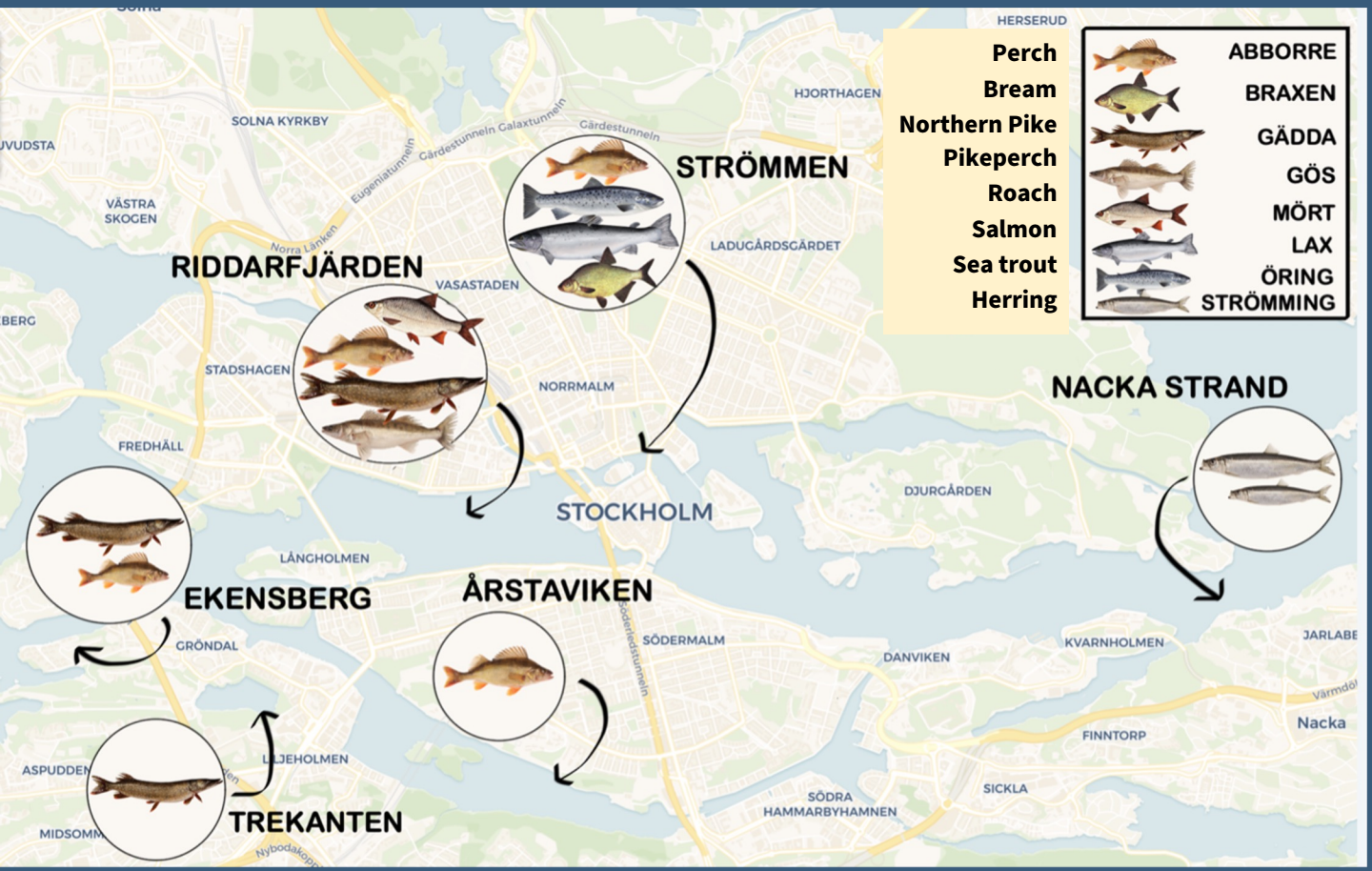
**Why do people fish?
Does it connect
people to nature in
the city?**

**What practices do
fishers have?**

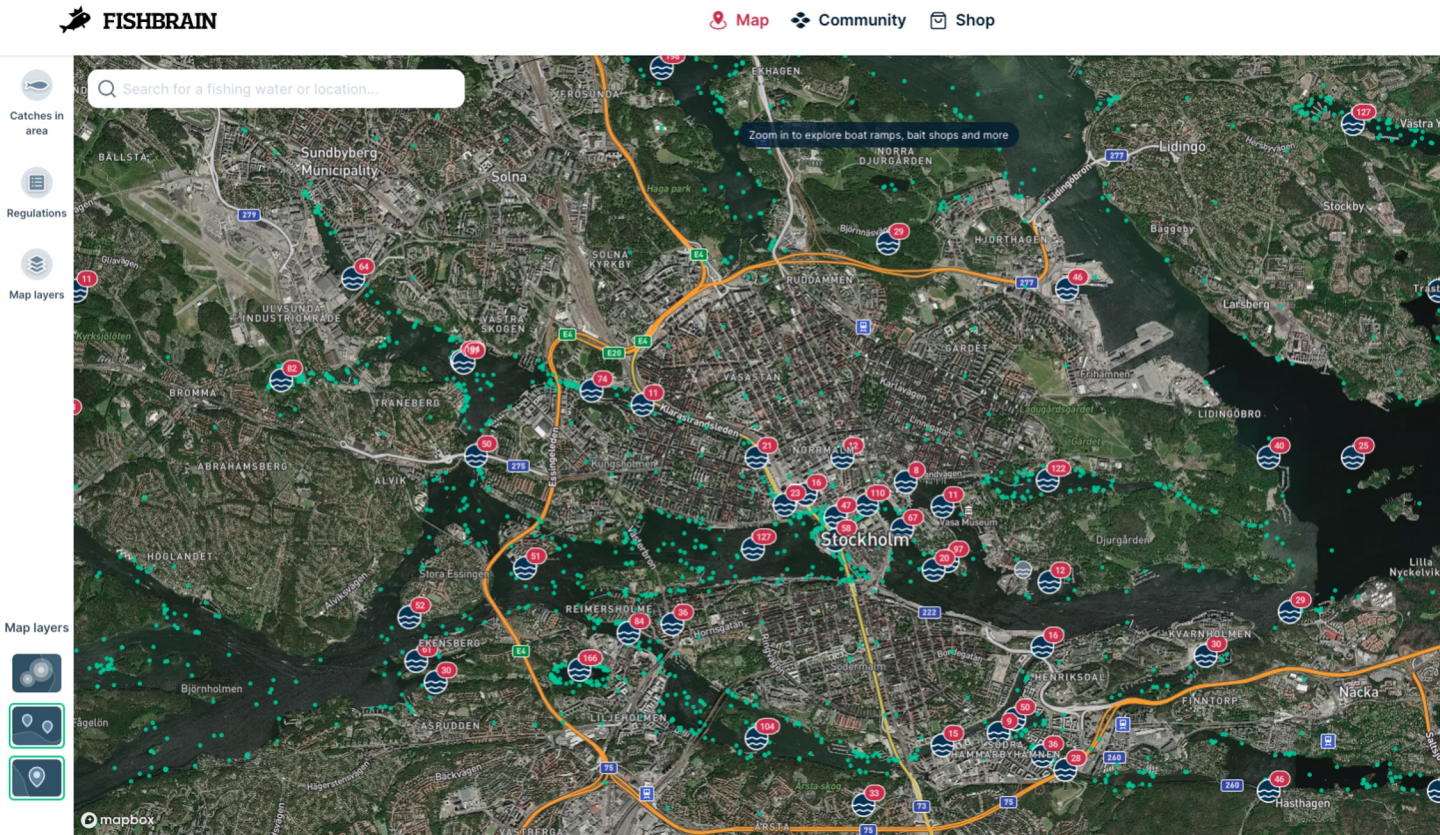
What and where do people fish



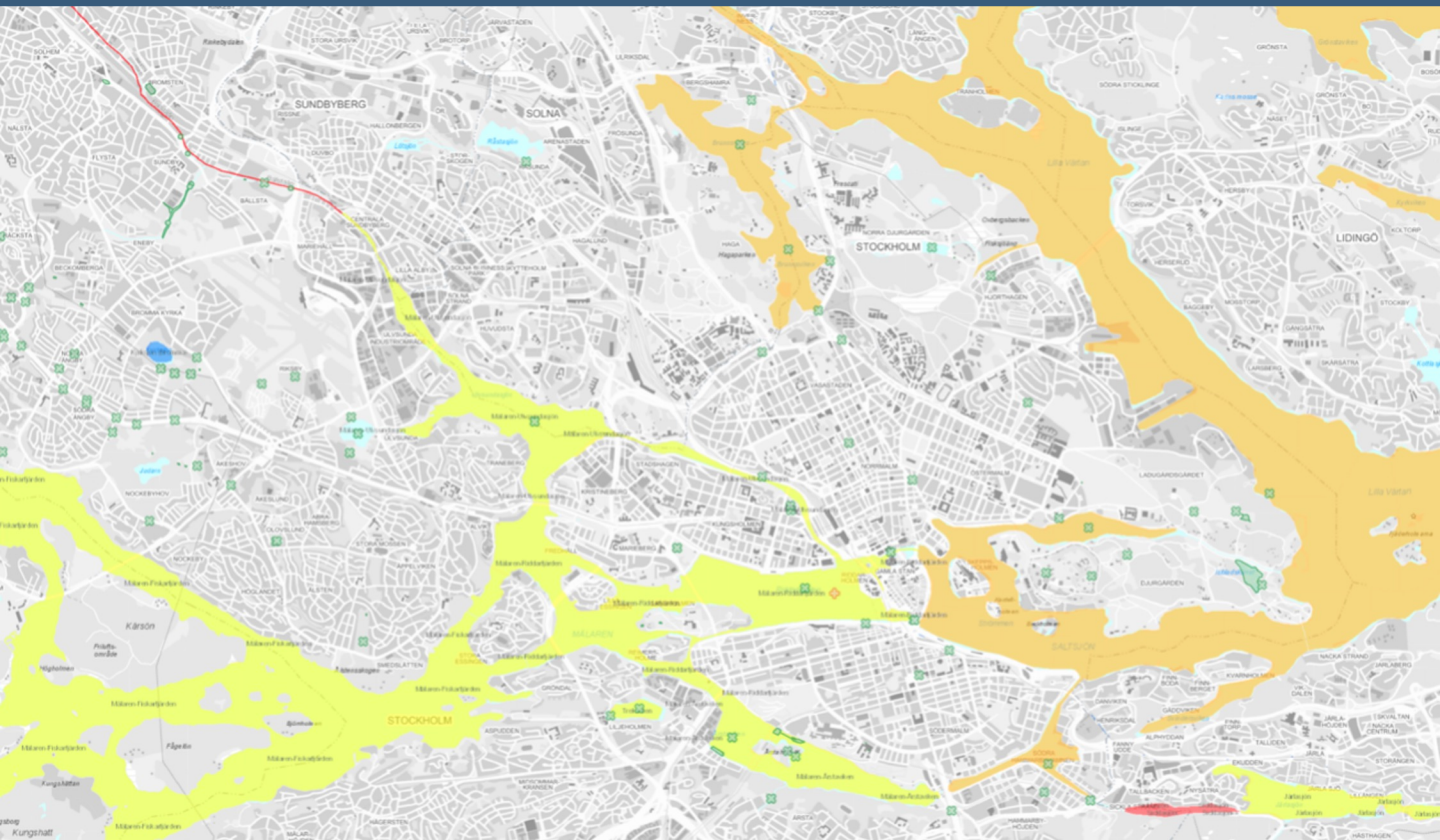
What and where do people fish



What and where do people fish



Ecological and chemical status



Ecological status

“Almost no fish left”

“Good water”

“Less people because less fish in the past years. Many are complaining, some say the whole fishing culture is impacted”

“No idea”

Why-How-Who



Preliminary findings

Catch & Releasers

WHO Swedish

WHY For fun

WHAT **Not** Common Bream
Perch, Salmon, Sea trout, Pikeperch, Pike

HOW Spin/Fly fishing
Maximum and special gear/clothing
Apps/Youtube/Social Media

MORAL RESPONSIBILITY to Fish Stocks

Catch & Cookers

WHO Non-Swedish, children

WHY For food

WHAT Common Bream
Perch, Salmon, Sea trout, Roach, Herring

HOW Angling
Minimum and regular gear/clothing
Family/Friends/Self-taught

MORAL RESPONSIBILITY to Fish Individuals

Why-How-Who

Current fieldwork

- Barriers and access
- Connection to nature
- Social interactions, knowledge and childhood connections



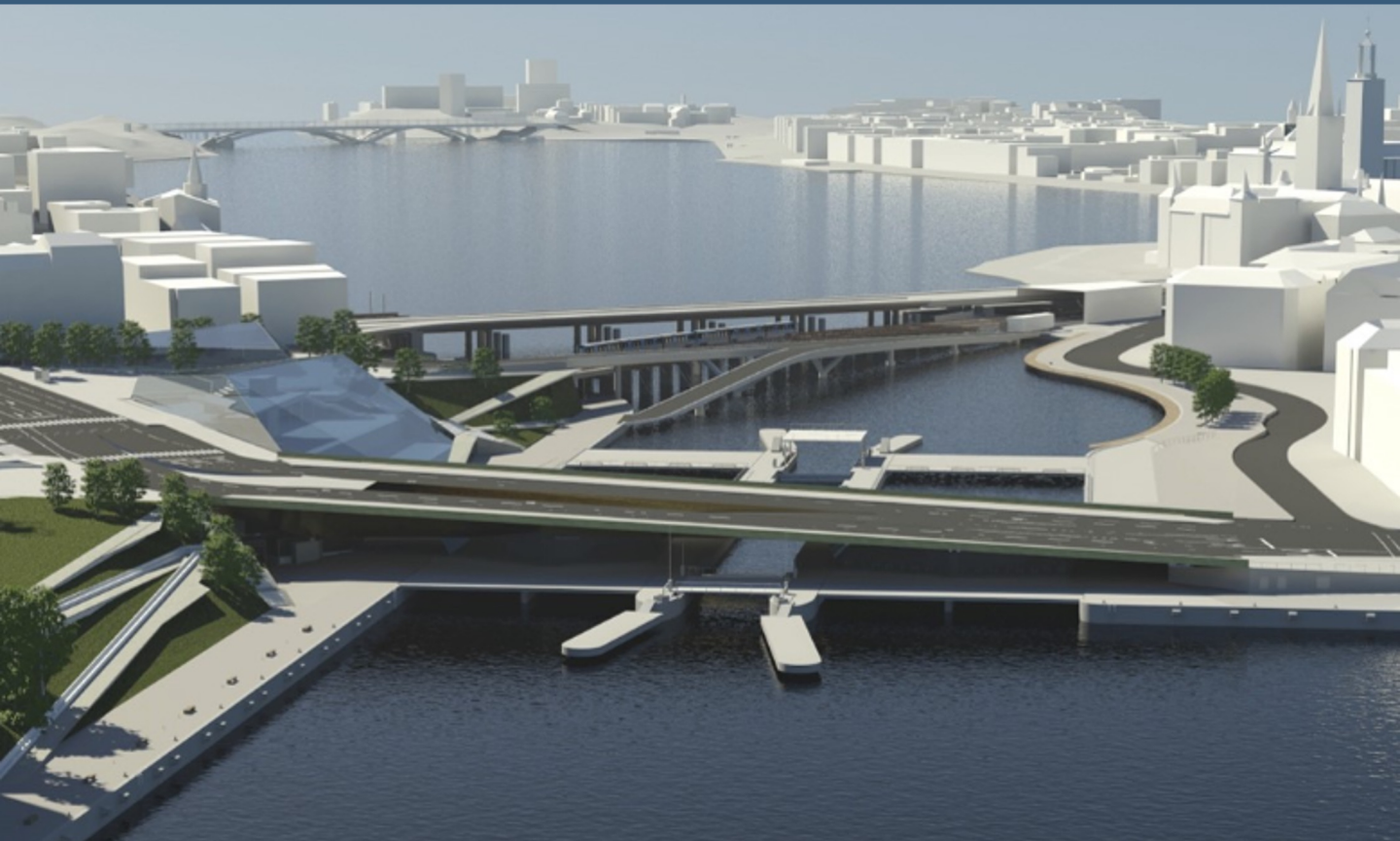
Governance & planning

- Actors
- Needs
- Accessibility
- Building

Slussen



Slussen



Slussen



Slussen



Slussen

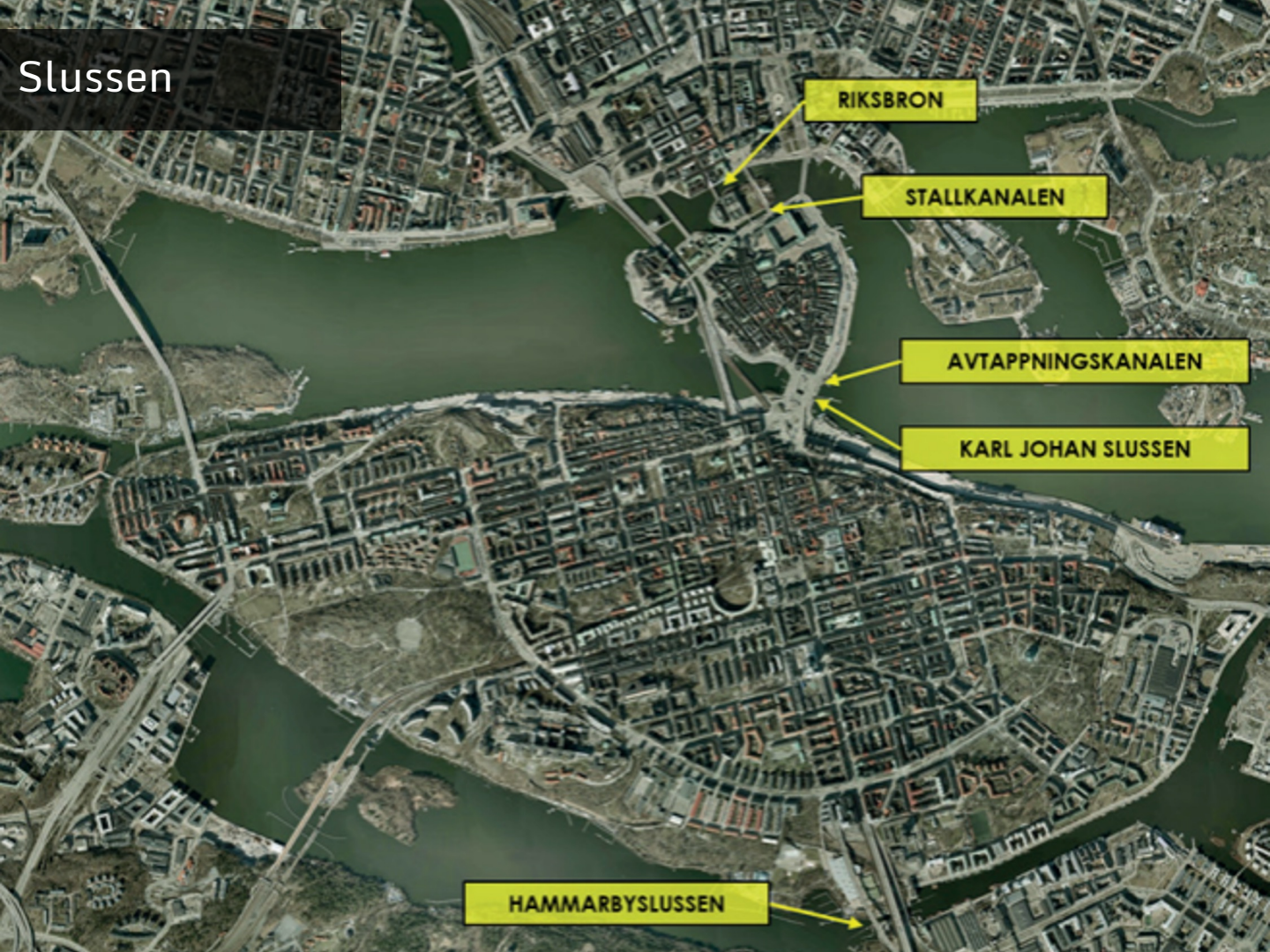
RIKSBRON

STALLKANALEN

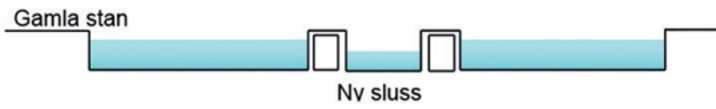
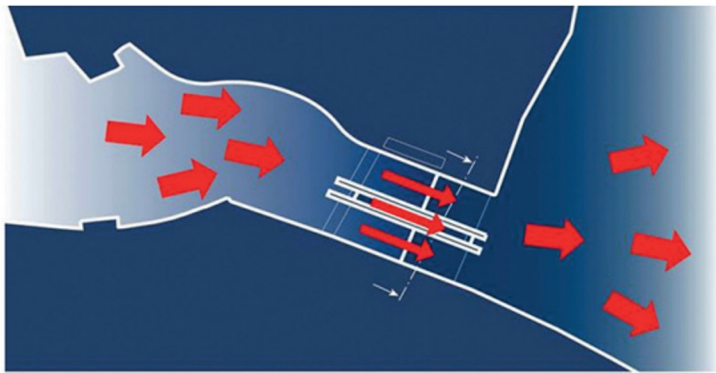
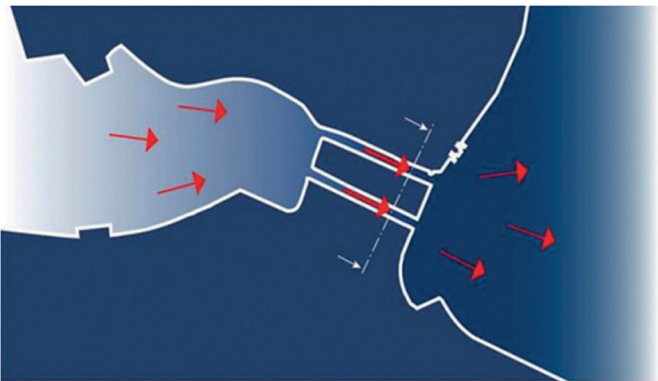
AVTAPPNINGSKANALEN

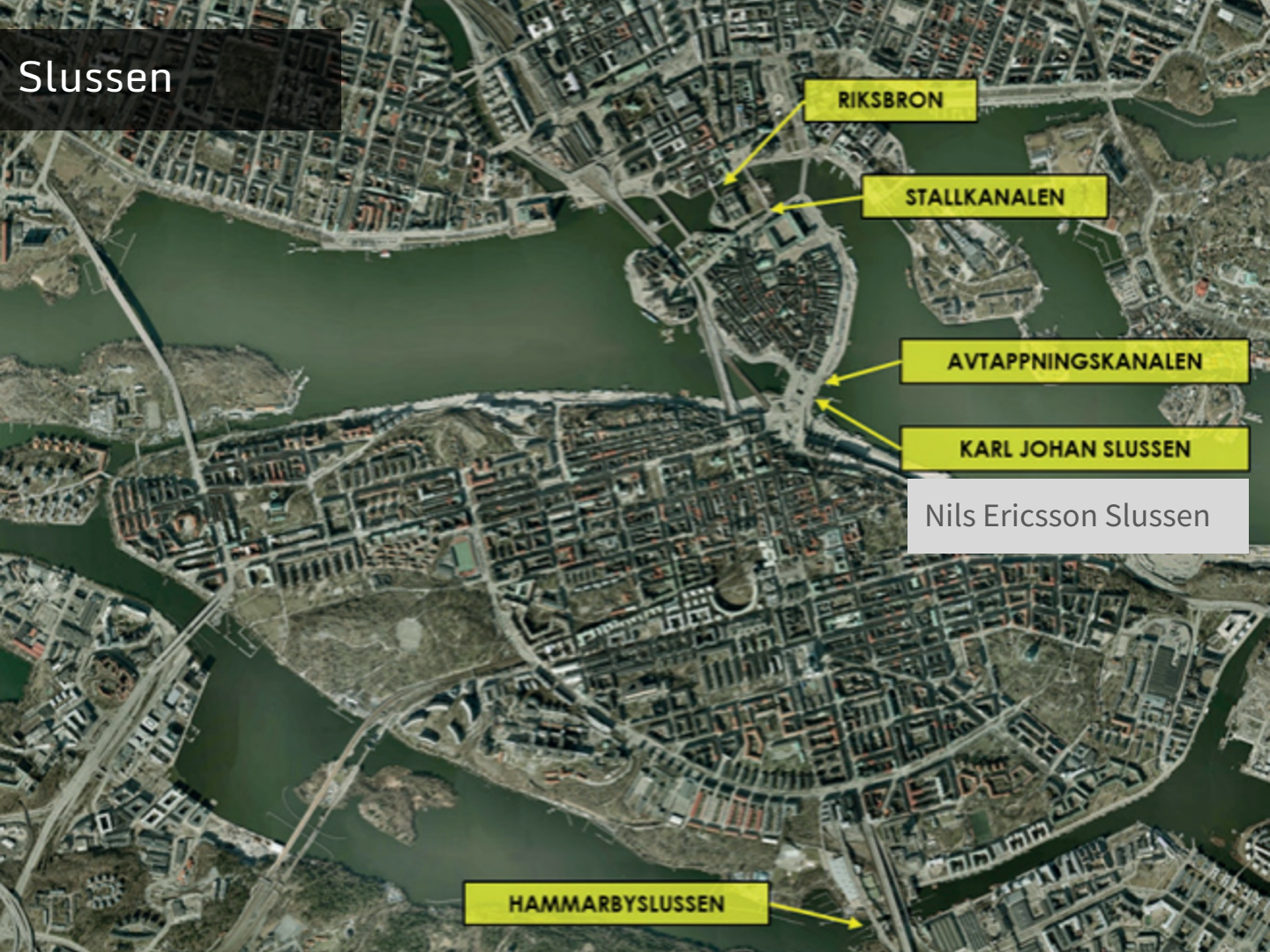
KARL JOHAN SLUSSEN

HAMMARBYSLUSSEN



Slussen





Slussen

RIKSBRON

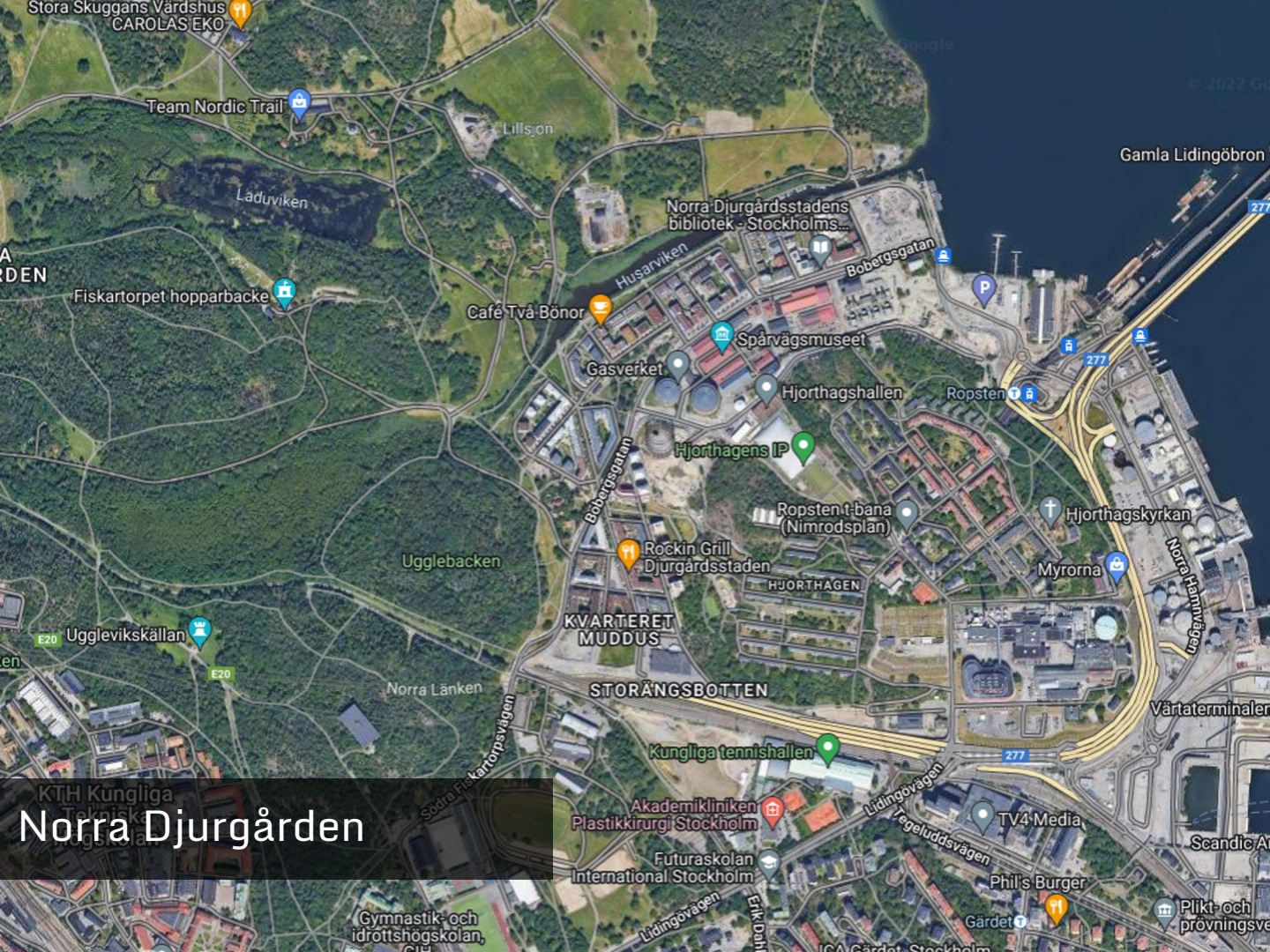
STALLKANALEN

AVTAPPNINGSKANALEN

KARL JOHAN SLUSSEN

Nils Ericsson Slussen

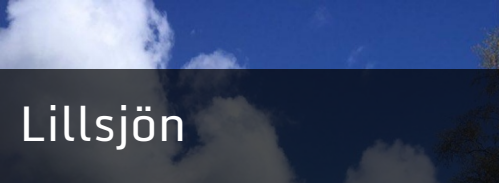
HAMMARBYSLUSSEN



Norra Djurgården



Lillsjön



Lillsjön



Access



Thank you!

anja.rieser@geo.uu.se
Urbanfishing.org